



***control logic***

# Product Overview



***sales :: support :: service :: [www.control-logic.com.au](http://www.control-logic.com.au)***

## Company Profile

A 100% Australian-owned family company, Control Logic has built a solid reputation for quality service for over twenty five years in the Australian electrical industry. Founded in Brisbane in 1981, the company has adapted to changing environments and technology to emerge an industry leader.

Today, more than 35 technically qualified staff across Australia provide you with service and support for your individual application. Continued product and service training ensures our staff can assist with the latest technological developments, and that our customers receive the service they expect and deserve.

Our commitment to sourcing quality products at competitive prices gives you the flexibility to choose from a wide range of well-respected brands.

At Control Logic, our most important asset is the customer. From product recommendation to the application process, our network of sales and support staff are committed to assisting you every step of the way.

Sales Phone: 1800 557 705 :: Sales Fax: 1800 237 743

Email: [sales@control-logic.com.au](mailto:sales@control-logic.com.au) :: [www.control-logic.com.au](http://www.control-logic.com.au)



Head Office – Brisbane



- Wide Range of Variable Speed Drives for all Applications.
- Machine Control, Pumps, HVAC, Position Control, Conveyors, Compressors and Custom Made Variable Speed Drive Cabinets.
- Low Voltage Products, Motors and Automation Products.
- Instrumentation.
- Power Factor Correction.



ABB *drives alliance*



NOTE: \*a

## **BD** | SENSORS pressure measurement

- Industrial / OEM Pressure Transmitters.
- Hydrostatic Submersible Level Probes.
- Flush-Mounted Transmitters for Hygienic and Foodstuff Applications.
- Digital Pressure Gauges.



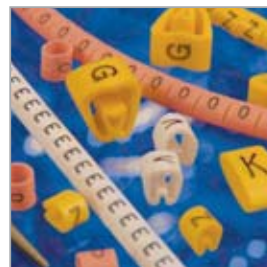
## **AMCI**

- Resolver Transducers.
- PLC Cards.



## **CRITCHLEY**

- Cable Marking Systems (PVC, Stainless).
- Cable Accessories.





- Wide Range of Industrial Incremental Pulse and Absolute (Binary and Grey Code) Encoders.
- Accessories Including Measuring Wheels and Flexible Couplings.



- Energy Analysers and Meters.
- Power Quality and Harmonic Data Managers.
- Energy Consumption and Management Software.





- PLC's.
- HMI's.
- SCADA Solutions.
- Fieldbus I/O Solutions.
- Industrial PC's.
- Open Platform Automation Software.
- Historian Software.
- Change Management Software.
- Real Time Information Portal Software.
- MES Plant Application Software.
- Process Systems.
- Proficy.



NOTE: \*b



- Motor Protection and Control Relays.
- Feeder Protection and Control Relays.

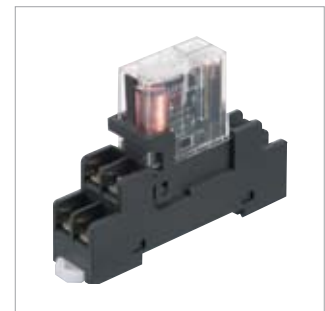


- Industrial Radio Remote Controls.
- Wireless Information Transmission.
- Radiosafe Emergency Stop (Cat. 3 or 4).



## Panasonic ideas for life

- Relays.
- Timers.
- Counters.
- Limit Switches.
- Temperature Controllers.
- Level Sensors and Controllers.
- PLC's.
- HMI's.
- Advanced Sensors and Vision Systems.



## PEPPERL+FUCHS

- Proximity Sensors.
- Capacitive Sensors.
- Photoelectric Sensors.
- Ultrasonic Sensors.
- Magnetic Sensors.
- Inductive Sensors.
- ASI, CAN, Device Net and Profibus Encoders.
- ASI and ASI Safety.
- Identification Systems.
- NAMUR Proximity Sensors.
- Intrinsically Safe Barriers.



NOTE: \*c

## PULS

- High Efficiency DC DIN Rail Power Supplies.
- Slim Design Single and Three Phase Units up to 960W.
- Redundancy and Buffer Units.
- DC UPS System.
- DC – DC Converters.



Efficient Power Supplies  
for a Greener World



## **N-TRON** THE INDUSTRIAL NETWORK COMPANY

- Industrial Ethernet Switches.
- Plug and Play Unmanaged and Fully Managed Ethernet Switches.
- Multi and Singlemode Fibre, ST or SC Options for up to 80km.
- IEE 802.11 A, G, N Compliant Wireless Access Points.



## Novaris

- Lightning and Surge Protection Equipment.
- Complete Solutions for Protection of Power and Data Signal Lines.



NOTE: \*d



- Counters.
- Indicators.
- PID Controllers.
- Digital Controllers.
- Panel Meters.
- Process Displays.
- Tachometers.
- HMI Displays.
- Strain Gauge Indicators.
- Process Controllers.
- Temperature Controllers.
- Message Displays.
- Signal Conditioning.
- Protocol Converters.
- Data Loggers.



## SCHMERSAL



- Electromechanical Safety Switches.
- Non-Contact Safety Switches.
- Two Hand Controls.
- Safety Light Curtains and Sensors.
- Safety Control Devices (Relays, PLC's and Safety Bus System).
- Limit Switches.
- Ex-Proof Switchgear For Safety Related and Industrial Applications.
- Lift Switchgear.



## SUNX

- Photoelectric Sensors.
- Fibre Sensors.
- Pressure Sensors.
- Flow Sensors.
- Safety Sensors.
- Measurement Sensors.



## UE

- Pressure and Temperature Controls.
- Pressure Switches.
- Level Switches.



NOTE: \*c

NOTE: Range only available in:

\*a Qld, NSW, Vic & WA. \*b Qld, SA & NT. \*c Qld. \*d NSW & Vic.



3277 GRASP09

# *control logic*

**sales :: support :: service :: [www.control-logic.com.au](http://www.control-logic.com.au)**

Sales Phone: 1800 557 705 :: Sales Fax: 1800 237 743 :: Email: [sales@control-logic.com.au](mailto:sales@control-logic.com.au)

