

Replacement: 1.7.7 USB Port (GT32)

Related manual: ARCT1F398E-4

The installation procedure of the USB driver was changed. Related pages: 1-33 to 36

1.7.7 USB Port (GT32)

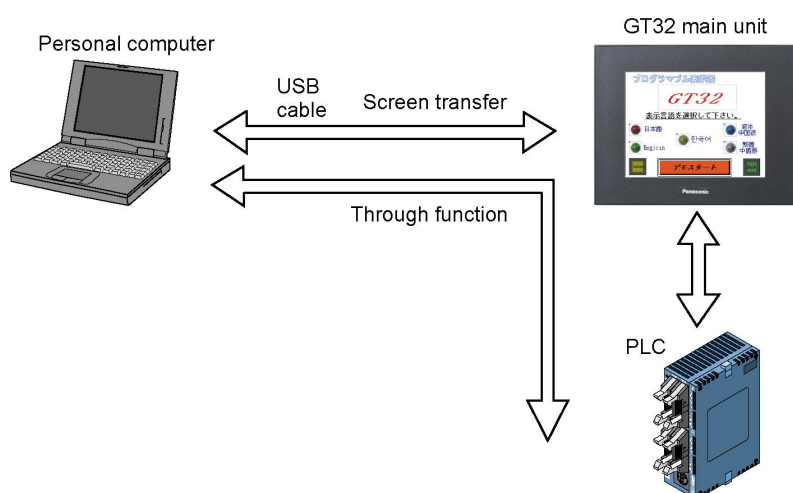
USB connection

GT32 has a USB port.

Communication with our software such as GTWIN becomes available by connecting to a PC with a USB cable.

Functions enabled by USB connection

- Through function using our PLCs
- Screen transfer (The communication in a speed approximately 3 times of the one with the Ethernet connection is possible.)



Note:

If more than one programmable display unit or IPD are connected to a PC using the USB port, communication cannot be performed.

Required items for the connection

• Personal computer

A personal computer with the following OS is required for connecting the GT32 with the USB cable.

<p>Windows®2000 Windows®XP</p>



Note:

To upgrade the GTWIN, download a difference file from our website.

URL: <http://www.mew.co.jp/ac/e/fasys/hmi/> (Member registration required : Free of charge)

• GTWIN

The following GTWIN is required.

<p>GTWIN: Ver. 2.80 or later</p>

• **USB cable**

Please prepare a commercial USB cable.

Cable for USB2.0 (or 1.1) (AB type) Max. 5m

• **Installation of USB driver**

The USB driver must be installed for using a USB cable.
Install it in the following procedure.

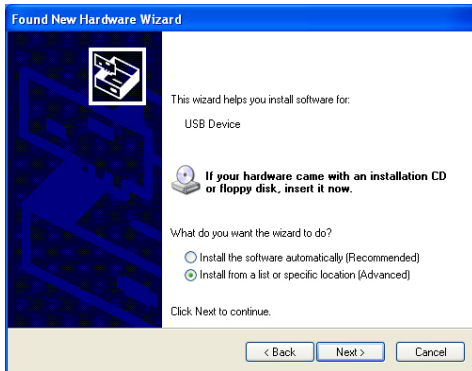
(1) Turn on the power supply of GT32, and connect the GT32 and a PC with a USB cable.



(2) After the connection, the PC automatically recognize the USB driver. The “Found new hardware wizard” screen is displayed.

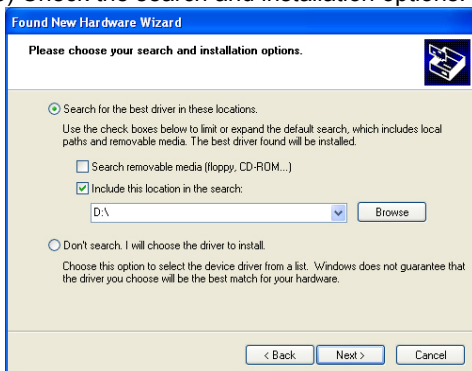


Select “No, not this time”, and click [Next].



Select “Install from a list or specific location (Advanced)”, and click [Next].

(3) Check the search and installation options.



Select “Search for the best driver in these locations”, and “Include this location in the search”. Then click [Next].

(4) Select the folder where the driver to be installed is saved.



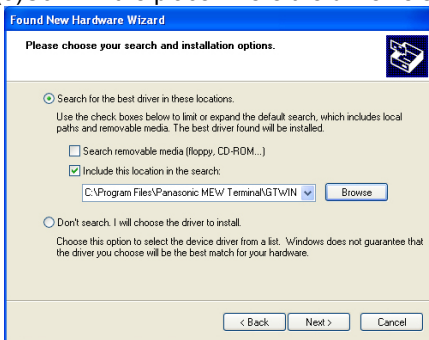
Specify the following folder, and click [OK].

Folder :

¥Program Files ¥Panasonic MEW Terminal
¥GTWIN¥GTWIN_USB

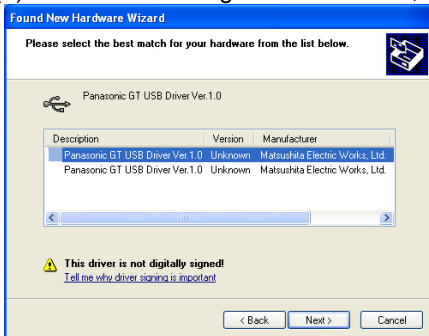
Note) If the driver is not saved in the above folder, specify the folder where the GTWIN is installed.

(5) Confirm the place where the driver is searched.



Confirm the specified folder, and click [Next].

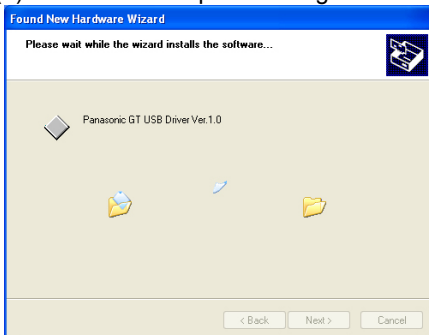
(6) When the following screen is shown, select a driver.



If a personal computer is equipped with more than two USB ports, or if the USB driver has been already installed, the left screen is shown.

Select either one driver, and click [Next].

(7) The installation process begins.



A message is displayed on the screen indicating that the installation is in progress, and the installation of the USB driver begins.

(8) Close the screen for the installation.



A message is displayed on the screen indicating that the installation completed. Click [Finish] to close the screen.

Screen transfer with USB cable



This setting is necessary for transferring screens using GTWIN. Select [GTWIN]→[File]→[Transfer]→[Condition]→[Network type], and change it to [USB]. Click [OK].