

SPECIFICATIONS

1. Rating

Rated control voltage	12/24V DC (at 12V DC: approx. 6 mA, 24V DC: approx. 11 mA)
Response time	Max. 10ms
Output current	Max. 150 mA

Note) When used as a direct load, any DC type relay may be applied.

2. Characteristics

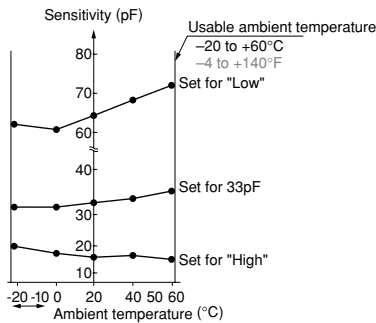
Allowable operating voltage	10 to 30V DC (Ripple factor: max. 10%)	
Adjustable sensitivity	20 to 50pF	
Vibration resistance	Functional	10 to 55 Hz, double amplitude of 0.3mm .012inch
	Destructive	16.7 Hz, double amplitude of 4mm .157inch
Shock resistance	Min. 980m/s ² {100G}	
Initial insulation resistance (At 500V DC)	Min. 100MΩ; Between each terminal, antenna and ground	
Breakdown voltage	1,500V AC for 1 min Between each terminal, antenna and ground	
Expected life (min. operations)	10 ⁷ (at 500 cps, 150mA resistive load) (Antenna portion of wire spring type: operating speed 120 cpm at O.T.=20mm)	
Power source ripple factor	Max. 10%	
Ambient temperature/humidity	-20 to +60°C -4 to +140°F/Max. 95%R.H. (at 20°C 68°F)	
Max. operating speed	50 cps (Antenna portion of wire spring type: 120 cpm at O.T.=20mm)	
Detected object	Conductor	

3. Protective characteristics

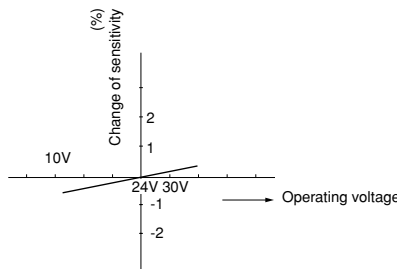
Protective construction	VL-T Mini touch limit switches
IEC	
IP60	○
IP64	○

DATA

1. Temperature characteristics (typical characteristics at 20°C 68°F)



2. Voltage characteristics (typical characteristics at 24V DC)



APPLICABLE WIRE

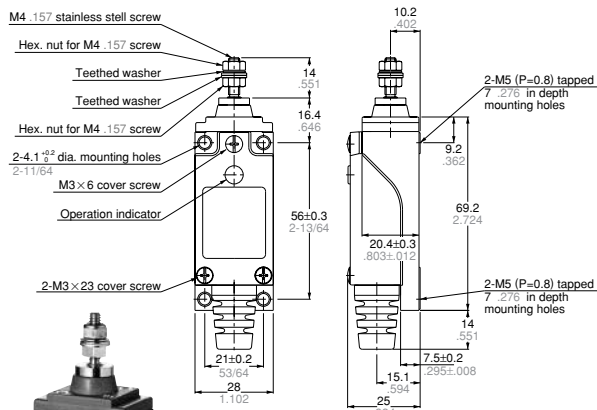
Name of electric wire	Applicable wire		
	Wire stand	Conductor	Finished outside diameter
Vinyl insulation vinyl captive cord (round) (VCTF)	3-wire	0.75mm ²	6 dia. to 9 dia.
		1.25mm ²	
Rubber insulation vinyl captive cable (round) (RVCTF)		2.0mm ²	

MOUNTING DIMENSIONS

The dimensions are the same as for the VL type limit switches. Refer back to the VL type data.

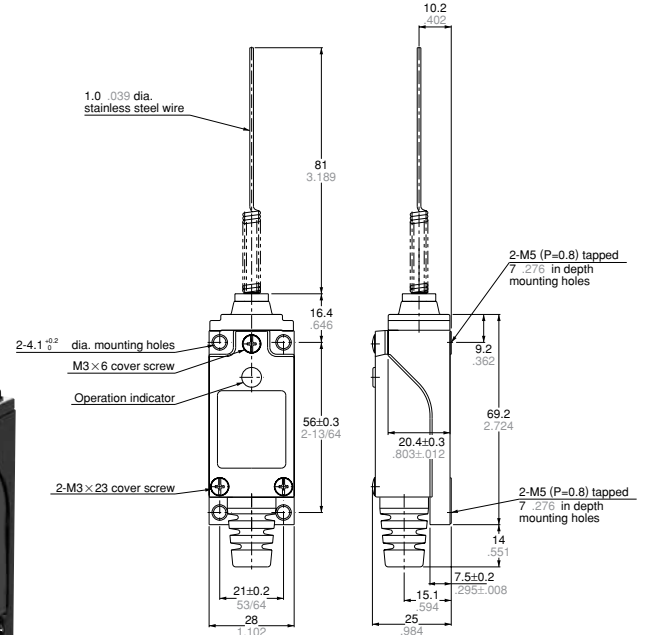
DIMENSIONS

• Free attachment type



AZ8430
Weight: 104g

• Wire spring type



AZ8469

General tolerance: ±0.4 ±.016