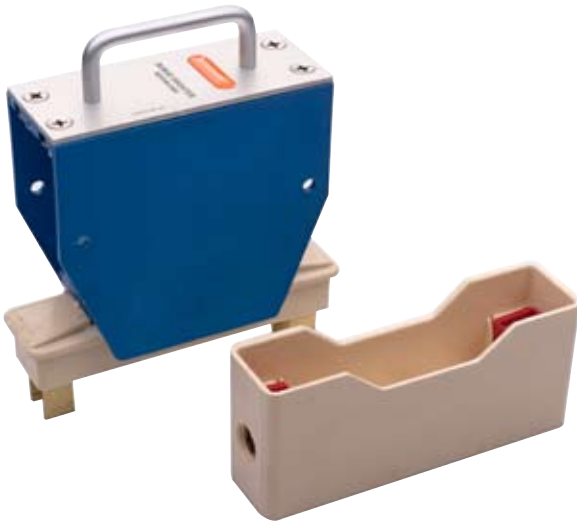


SDH High Voltage Surge Diverters

Novaris SDH High Voltage Surge Diverters have been engineered for system voltages above 600VRMS. Typical applications include aviation runway lighting, mining and railway industries.



SDH - 70 - 2000 - H



SDH-140-1000

SDH-200-1000

SDH-70-2000

SDH-100-2000



Electrical Specifications					
Connection type		Shunt			
Modes of protection		L-PE			
Phases		1			
Maximum continuous voltage	U_0	1000		2000	
Maximum discharge current (8/20 μ s)	I_{max}	140kA	200kA	70kA	100kA
Voltage protection level @ 3kA (8/20 μ s)	U_p	2.6kV		4.8kV	
Response time	t_A	<5ns			

Mechanical Specifications	
Operating temperature / humidity	-40 to +80°C / 0 to 90% non-condensing
Terminal capacity	25mm ²
Terminal screw torque	2.5Nm
Environmental	IP 20
Mounting	See mounting options below
Enclosure / colour	ABS, ceramic / Blue
Weight	2.0kg

Dimensions				
Width	164mm	193mm	164mm	193mm
Height	56mm			
Depth	215mm			

Options	
GEC RSL63H mounting	H
GEC RSL63P mounting	P
GEC RSL63PH mounting	PH

Standards Compliance
IEC 61643-1 class I
AS/NZS 1768 category C
IEEE C62.41 category C
BS 6651 category C
CP 33 category C